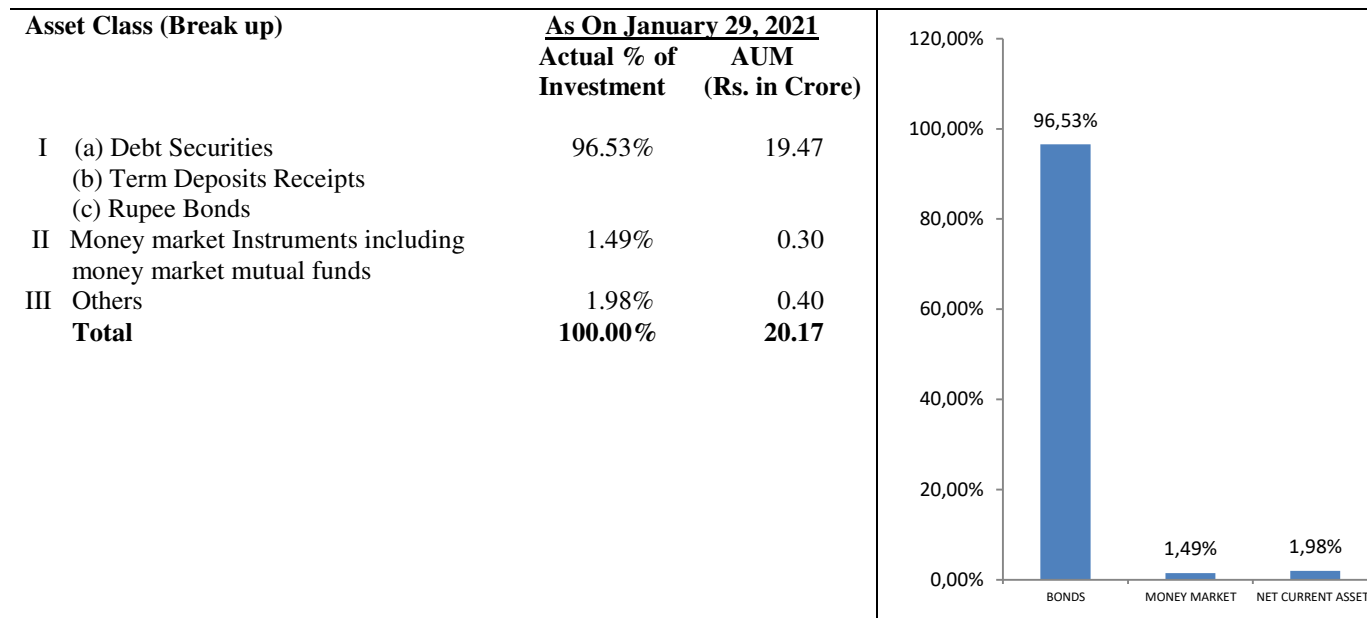


NPS Trust - A/c UTI Retirement Solutions Scheme C – Tier II

**Fund Size (January 29, 2021) : Rs. 20.17 Cr**  
**Date of Inception : December 14, 2009**  
**NAV as on January 29, 2021 : Rs. 27.9225**

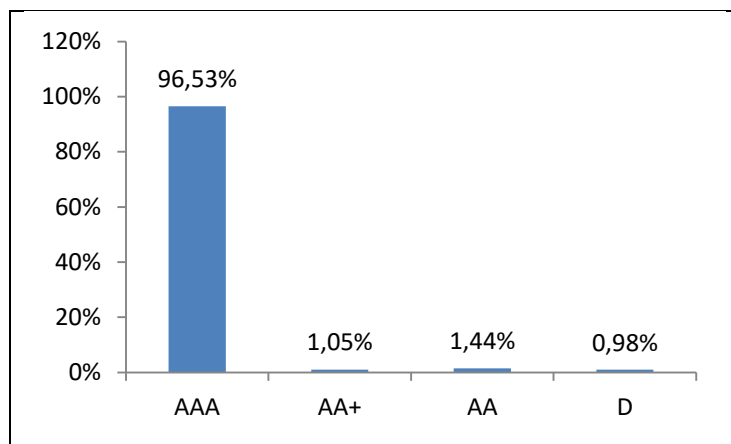
**Annualised Return since Inception as on January 29, 2021 : 9.66% (CAGR)**

**Component of AuM:**



**Credit Quality of Debt Component:**

Rating wise exposure in Bonds / NCDs		
Rating	As on January 29, 2021	
	Total Value	Exposure in %
AAA	18.80	96.53
AA+	0.20	1.05
AA	0.28	1.44
D	0.19	0.98
<b>TOTAL</b>	<b>19.47</b>	<b>100.00</b>





12. 7.95% SIKKA PORTS & TERMINALS 28/10/2026	INE941D07158	52220	10,000.00	1,078,518.00	0.53	AAA
13. 7.95% HDFC BANK 21/09/2026	INE040A08369	64191	70,000.00	7,678,811.00	3.81	AAA
14. 8.85% AXIS BANK 05/12/2024	INE238A08351	64191	50,000.00	5,547,130.00	2.75	AAA
15. 7.65% AXIS BANK 30/01/2027	INE238A08468	64191	50,000.00	5,341,525.00	2.65	AAA
16. 7.60% ICICI BANK 07/10/2023	INE090A08TU6	64191	30,000.00	3,177,252.00	1.58	AAA
17. 8.60% AXIS BANK 28/12/2028	INE238A08450	64191	20,000.00	2,249,142.00	1.11	AAA
18. 9.25% (SEMI-ANNUAL) ICICI BANK 04/09/2024	INE090A08TO9	64191	20,000.00	2,245,176.00	1.11	AAA
19. 8.44% HDFC 28/12/2028	INE040A08393	64191	20,000.00	2,238,954.00	1.11	AAA
20. 7.47% ICICI BANK 25/06/2027	INE090A08TY8	64191	20,000.00	2,129,840.00	1.06	AAA
21. 8.45% ICICI BANK 31/03/2025	INE090A08TS0	64191	10,000.00	1,097,204.00	0.54	AAA
22. 9.15% AXIS BANK 31/12/2022	INE238A08344	64191	10,000.00	1,069,823.00	0.53	AAA
23. 7.60% AXIS BANK 20/10/2023	INE238A08401	64191	10,000.00	1,059,330.00	0.53	AAA
24. 8.72% KOTAK MAHINDRA BANK 14/01/2022	INE237A08924	64191	10,000.00	1,039,772.00	0.52	AAA
25. 8.75% IDFC BANK 28/07/2023	INE092T08CA0	64191	10,000.00	1,033,012.00	0.51	AA
26. 7.95% LIC HF 29/01/2028 (PUT OPTION DATE 27/08/2021)	INE115A07MW4	64192	20,000.00	2,109,044.00	1.05	AAA
27. 7.35% HDFC 10/02/2025	INE001A075G6	64192	20,000.00	2,092,618.00	1.04	AAA
28. 9.08% LIC HF 10/10/2028	INE115A07ND2	64192	10,000.00	1,123,688.00	0.56	AAA
29. 8.70% LIC HSG FIN 24/12/2025	INE115A07NR2	64192	10,000.00	1,107,967.00	0.55	AAA
30. 8.75% LIC HF 08/12/2028	INE115A07NP6	64192	10,000.00	1,106,499.00	0.55	AAA
31. 8.55% HDFC 27/03/2029	INE001A07RT1	64192	10,000.00	1,103,862.00	0.55	AAA
32. 8.45% LIC HSG FIN 22/05/2026	INE115A07JM1	64192	10,000.00	1,100,527.00	0.55	AAA
33. 9.08% LIC HF 17/10/2023	INE115A07NE0	64192	10,000.00	1,094,061.00	0.54	AAA
34. 8.52% LIC HSG FIN 03/03/2025	INE115A07GT2	64192	10,000.00	1,090,314.00	0.54	AAA
35. 7.99% HDFC 11/07/2024	INE001A07RV7	64192	10,000.00	1,072,804.00	0.53	AAA
36. 7.90% LIC HSG FIN 08/05/2024	INE115A07LS4	64192	10,000.00	1,065,053.00	0.53	AAA
37. 7.45% LIC HF 17/10/2022	INE115A07MO1	64192	10,000.00	1,038,902.00	0.52	AAA
38. 7.40% HDFC 28/02/2030	INE001A07SI2	64192	10,000.00	1,038,145.00	0.51	AAA
39. 7.78% LIC HF 23/05/2022	INE115A07LW6	64192	10,000.00	1,037,871.00	0.51	AAA
40. 7.42% LIC HF 15/07/2022	INE115A07MG7	64192	10,000.00	1,034,585.00	0.51	AAA
41. 6.43% HDFC 29/09/2025	INE001A07SR3	64192	10,000.00	1,015,831.00	0.50	AAA
42. 8.60% LIC HSG FIN 26/02/2021	INE115A07JF5	64192	10,000.00	1,003,656.00	0.50	AAA
43. 6.83% HDFC 08/01/2031	INE001A07SW3	64192	10,000.00	998,465.00	0.49	AAA
44. 10.30% ILFS FIN SER 22/03/2022	INE121H08024	64200	5,000.00	500,000.00	0.25	D
45. 10.30% ILFS 28/12/2021	INE121H08016	64200	4,000.00	400,000.00	0.20	D
46. 8.79% HDB FIN. SER. 22/07/2026	INE756I08108	64990	10,000.00	1,068,218.00	0.53	AAA
47. 8.69% ILFS 25/08/2025	INE871D07OJ9	64990	10,000.00	1,000,000.00	0.50	D
<b>Cash / Cash Equivalent &amp; Net Current Assets</b>						
Money Market Mutual Funds						
1. UTI - LIQUID CASH PLAN-INSTITUTIONAL-DIRECT-GROWTH	120304	66301	690.42	2,313,723.96	1.15	
2. HDFC OVERNIGHT FUND - GROWTH OPTION - DIRECT PLAN	119110	66301	230.07	699,964.92	0.35	
Net Current Assets				3,990,147.57	1.98	
<b>GRAND TOTAL</b>			<b>1,812,352.49</b>	<b>201,719,607.26</b>	<b>100.00</b>	
<b>Average Maturity of Portfolio (in yrs)</b>			5.93			
<b>Modified Duration (in yrs)</b>			4.12			
<b>Yield to Maturity (%) (annualised) (at market price)</b>			5.93			
<b>Credit Rating Exposure</b>						
Central Government Securities				0.00	0.00	
State Development Loans				0.00	0.00	
AAA / Equivalent				187,980,950.81	93.19	
A1+ (For Commercial paper)				0.00	0.00	
AA+ / Equivalent				2,035,896.00	1.01	
AA / Equivalent				2,798,924.00	1.39	
AA- / Equivalent				0.00	0.00	
A+ / Equivalent				0.00	0.00	
A / Equivalent				0.00	0.00	
A- / Equivalent				0.00	0.00	
BBB+ / Equivalent				0.00	0.00	
BBB / Equivalent				0.00	0.00	
BBB- / Equivalent				0.00	0.00	
D / Equivalent				0.00	0.00	
(out of above Net NPA)				1,900,000.00	0.94	
<b>Total</b>				<b>194,715,770.81</b>	<b>96.53</b>	
Bank FD				0.00	0.00	
Equity				0.00	0.00	
Equity Mutual Funds				0.00	0.00	
Money Market Mutual Funds				3,013,688.88	1.49	
Cash / Cash Equivalent Net Current Assets				3,990,147.57	1.98	
Application Pending Allotment - NCDs				0.00	0.00	
Others ( Treasury Bills and Gilt Mutual Funds)				0.00	0.00	
<b>Grand Total</b>				<b>201,719,607.26</b>	<b>100.00</b>	
<b>Unit Outstanding</b>			7,224,263.9537			
<b>NAV</b>			27.9225			

**\*\* Industry Code details given in Annexure 1**

**Note:**

The provision made for NPAs as of January 29, 2021 is Rs. 2,097,704.53 and its percentage to NAV is 1.04.

Total value and Percentage of illiquid equity shares	NIL
NAV at the beginning of the period	27.8810
NAV at the end of the period	27.9225
Total Outstanding exposure in derivative instruments at the end of the period	NIL
Total Infrastructure investments	
Market Value	4,013,821.00
% Of Portfolio	1.99

Industry Code	Industry Name
05102	Belowground mining of hard coal
06102	On shore extraction of crude petroleum
07100	Mining of iron ores
10402	Manufacture of vegetable oils and fats excluding corn oil
10502	Manufacture of milk-powder, ice-cream powder and condensed milk except baby milk food
10712	Manufacture of biscuits, cakes, pastries, rusks etc.
10721	Manufacture or refining of sugar (sucrose) from sugercane
10791	Processing and blending of tea including manufacture of instant tea
10799	Other semi-processed, processed or instant foods n.e.c. except farinaceous products and malted foods and manufacturing activities like manufacture of egg powder, sambar powder etc. (this excludes the activities covered under 10619)
11011	Manufacture of distilled, potable, alcoholic beverages such as whisky, brandy, gin, "mixed drinks" etc.
12003	Manufacture of cigarettes, cigarette tobacco
13114	Preparation and spinning of man-made fiber including blended man-made fiber
13121	Weaving, manufacture of cotton and cotton mixture fabrics
13124	Weaving, manufacturing of man-made fiber and man-made mixture fabrics
13134	Finishing of man-made and blended man-made textiles
14101	Manufacture of All Types of Textile Garments and Clothing Accessories
15201	Manufacture of leather footwear such as shoes, sandals, chappals, leather-cum-rubber/plastic cloth sandles and chappals
17013	Manufacture of paper and paper rolls not further processed
19201	Production of liquid and gaseous fuels, illuminating oils, lubricating oils or greases or other products from crude petroleum or bituminous minerals
19209	Manufacture of other petroleum n.e.c. (includes manufacture of petroleum jelly, micro-crystalline petroleum wax, slack wax, ozokerite, lignite wax, petroleum coke, petroleum bitumen and other residues of petroleum oils or of oils obtained from bituminous minerals)
20219	Manufacture of other agrochemical products n.e.c.
20221	Manufacture of paints and varnishes, enamels or lacquers
20231	Manufacture of soap all forms
20235	Manufacture of preparations for oral or dental hygiene (includes manufacture of toothpastes, toothpowder, mouthwash, oral, perfumes, dental fixative pastes and powders etc.)
20236	Manufacture of hair oil, shampoo, hair dye etc. (includes manufacture of shampoos, hair sprays, hair fixers, hair oils, hair creams, hair dyes and bleaches and preparations for permanent waving or straightening of the hair etc.)
21002	Manufacture of allopathic pharmaceutical preparations
22111	Manufacture of rubber tyres and tubes for motor vehicles, motorcycles, scooters, three-wheelers, tractors and aircraft
23941	Manufacture of clinkers and cement
24102	Manufacture of direct reduction of iron (sponge iron) and other spongy ferrous products
24105	Manufacture of hot-rolled and cold-rolled products of steel
24201	Manufacture of Copper from ore, and other copper products and alloys
24202	Manufacture of Aluminium from alumina and by other methods and products of aluminium and alloys
24203	Manufacturing of lead, zinc and tin products and alloys
25910	Forging, pressing, stamping and roll-forming of metal; powder metallurgy
26309	Manufacture of other communication equipments n.e.c.
27104	Manufacture of electricity distribution and control apparatus (electrical apparatus for switching or protecting electrical circuits (e.g. switches, fuses, voltage limiters, surge suppressors, junction boxes etc.) for a voltage exceeding 1000 volts; similar apparatus (including relays, sockets etc.) for a voltage not exceeding 1000 volts; boards, panels, consoles, cabinets and other bases equipped with two or more of the above apparatus for electricity control or distribution of electricity including power capacitors.)
27201	Manufacture of primary cells and primary batteries and rechargeable batteries, cells containing manganese oxide, mercuric oxide silver oxide or other material
27400	Manufacture of electric lighting equipment
27900	Manufacture of other electrical equipment
28110	Manufacture of engines and turbines, except aircraft, vehicle and cycle engines
28199	Manufacture of other general purpose machinery n.e.c. ( fans intended for industrial applications, exhaust hoods for commercial, laboratory or industrial use; calendering or other rolling machines other than for metals or glass; gaskets and similar joints made of a combination of materials or layers of the same material and other general purpose machinery including manufacture of parts and accessories for general purpose machinery and equipment.)
28211	Manufacture of tractors used in agriculture and forestry
29101	Manufacture of passenger cars
29102	Manufacture of commercial vehicles such as vans, lorries, over-the-road tractors for semi-trailers etc.
29103	Manufacture of chassis fitted with engines for the motor vehicles included in this class
29304	Manufacture of motor vehicle electrical equipment, such as generators, alternators, spark plugs, ignition wiring harnesses, power window and door systems, assembly of purchased gauges into instrument panels, voltage regulators, etc.
30911	Manufacture of motorcycles, scooters, mopeds etc. and their engine

32111	Manufacture of jewellery of gold, silver and other precious or base metal metal clad with precious metals or precious or semi-precious stones, or of combinations of precious metal and precious or semi-precious stones or of other materials
35101	Electric power generation by hydroelectric power plants
35102	Electric power generation by coal based thermal power plants
35104	Electric power generation and transmission by nuclear power plants
35106	Electric power generation using other non conventional sources
35107	Transmission of electric energy
35202	Distribution and sale of gaseous fuels through mains
41001	Construction of buildings carried out on own-account basis or on a fee or contract basis
42101	Construction and maintenance of motorways, streets, roads, other vehicular and pedestrian ways, highways, bridges, tunnels and subways
42202	Construction/erection and maintenance of power, telecommunication and transmission lines
42902	Construction of waterways, harbours and river works, dredging of waterways
42909	Other civil engineering projects n.e.c.
46101	Activities of commission agents, brokers dealing in wholesale trade of agricultural raw material, live animals, food, beverages, intoxicants and textiles
47510	Retail sale of textiles in specialized stores
49110	Passenger rail transport
50120	Sea and coastal freight water transport
51101	Passenger Airways
51201	Freight air transport services
52213	Switching and shunting
52220	Service activities incidental to water transportation
55101	Hotels and Motels, inns, resorts providing short term lodging facilities; includes accommodation in house boats
60200	Television Programming and Broadcasting Activities
61101	Activities of basic telecom services: telephone, telex and telegraph (includes the activities of STD/ISD booths)
61104	Activities of providing internet access by the operator of the wired infrastructure
61202	Activities of maintaining and operating paging, cellur and other tetecommunication networks
62011	Writing , modifying, testing of computer program to meet the needs of a particular client excluding web-page designing
64191	Monetary intermediation of commercial banks, saving banks. postal savings bank and discount houses
64192	Activities of specialized institutions granting credit for house purchases that also take deposits
64199	Other monetary intermediation services n.e.c.
64200	Activities of holding companies
64920	Other credit granting
64990	Other financial service activities, except insurance and pension funding activities, n.e.c.
65110	Life Insurance
65120	Non-Life Insurance
66120	Security and commodity contracts brokerage
66301	Management of Mutual Funds
68100	Real estate activities with own or leased property
72100	Research and experimental development on natural sciences and engineering